

81 Português -NE

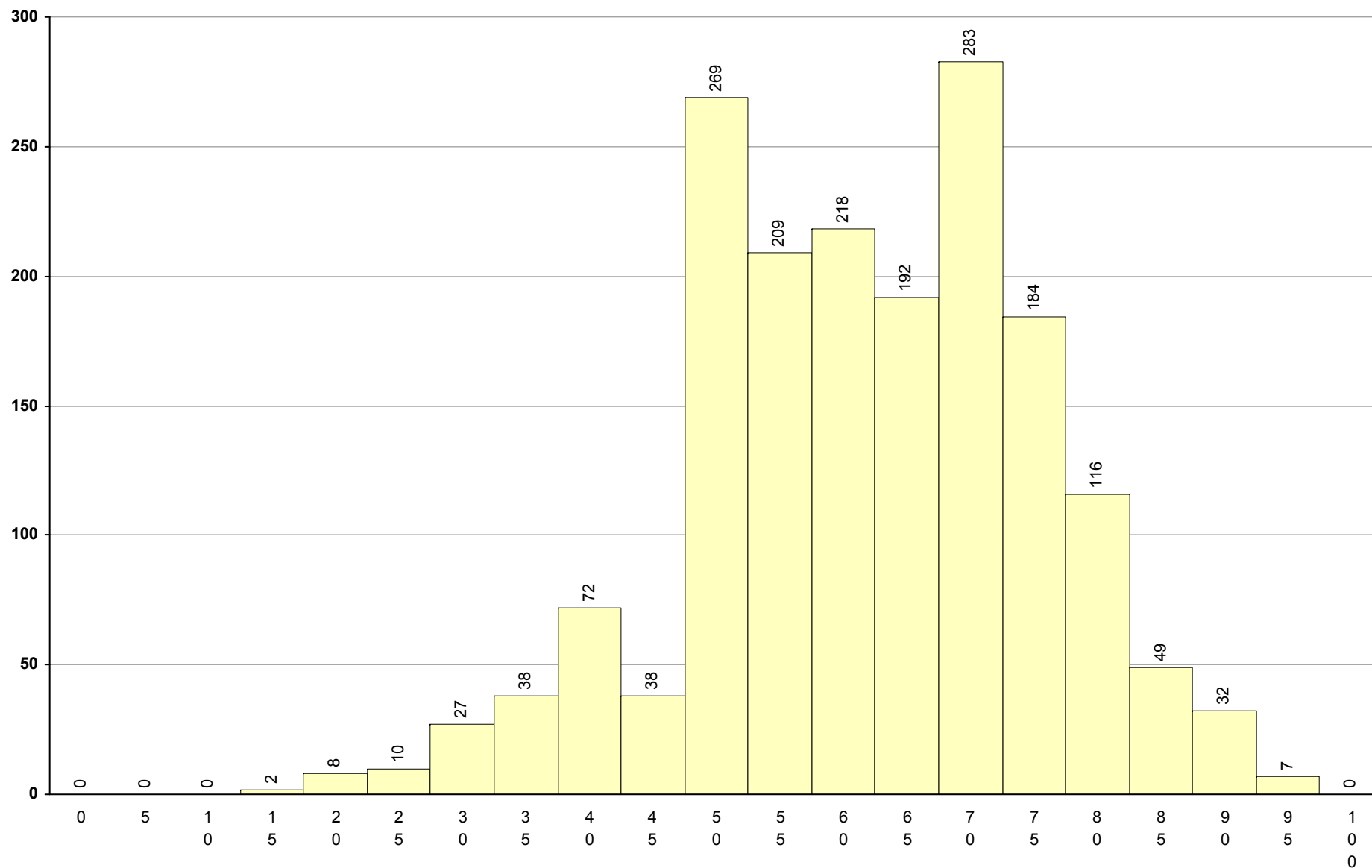
1ª Fase

Provas: 1754

Negativas: 195

Média: 63

Desvio: 14



82 Matemática -NE

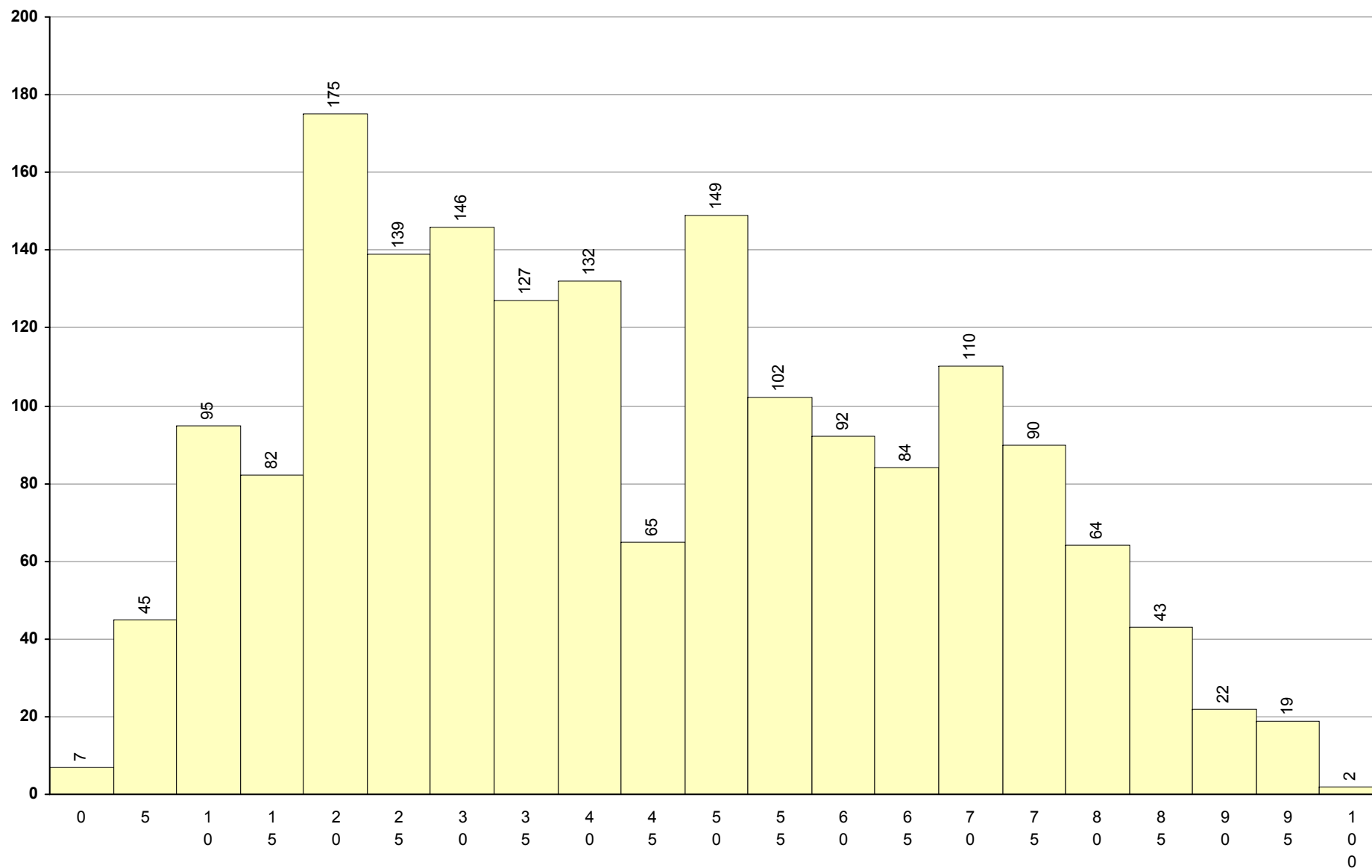
1ª Fase

Provas: 1790

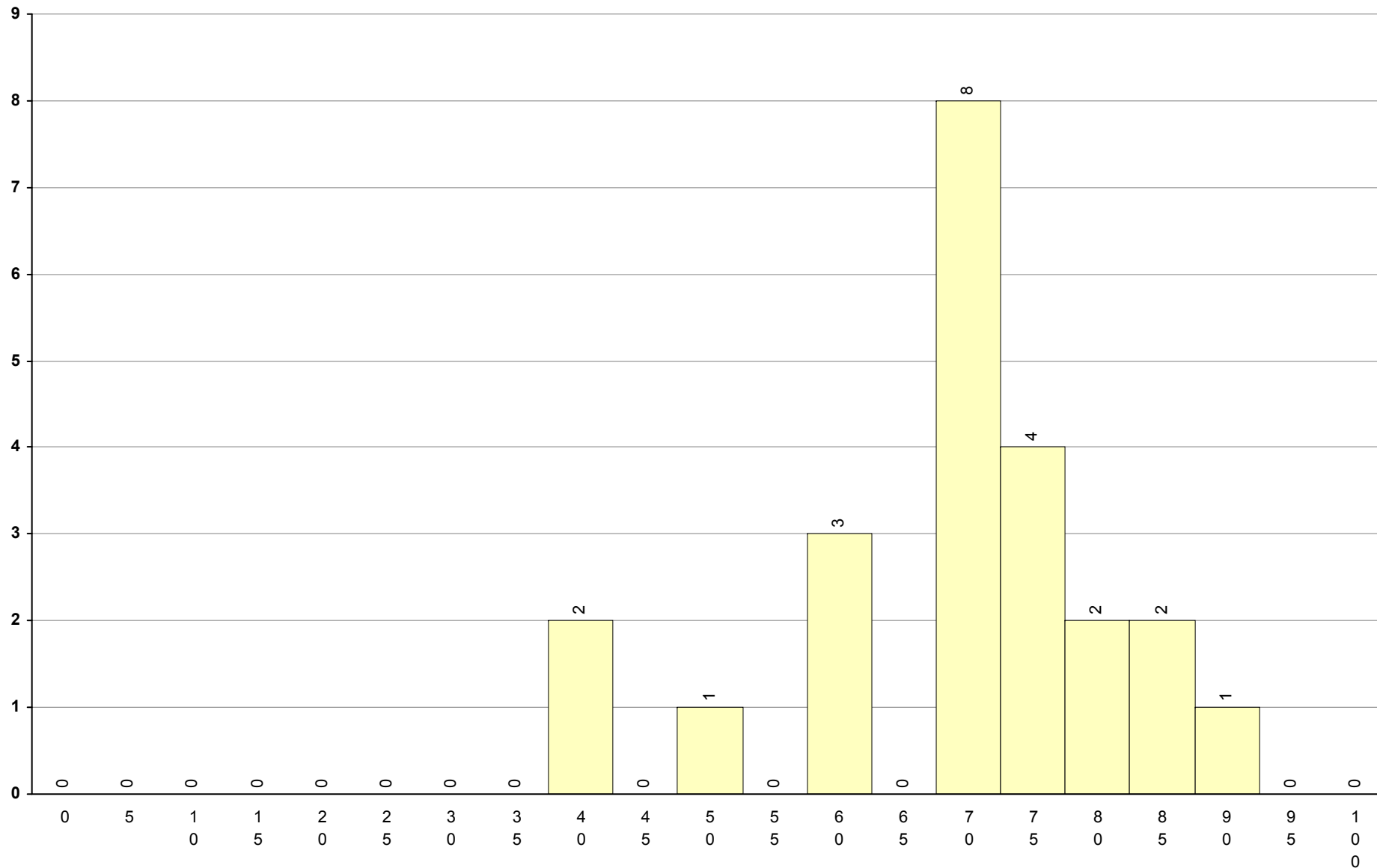
Negativas: 1013

Média: 45

Desvio: 23



85 PL2 -NE	1ª Fase	Provas: 23	Negativas: 2	Média: 71	Desvio: 13
------------	---------	------------	--------------	-----------	------------



91 Português

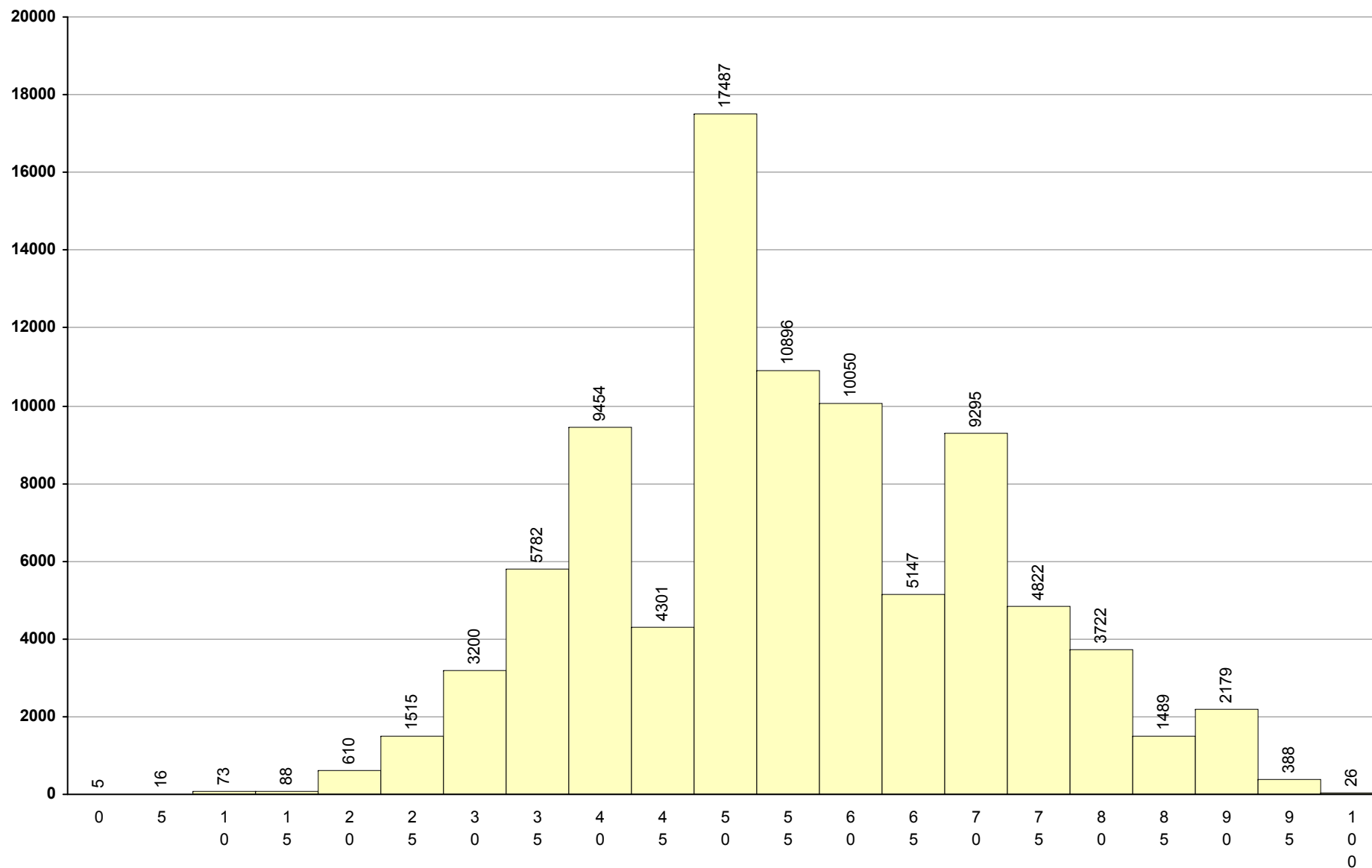
1ª Fase

Provas: 90545

Negativas: 25044

Média: 57

Desvio: 15



92 Matemática

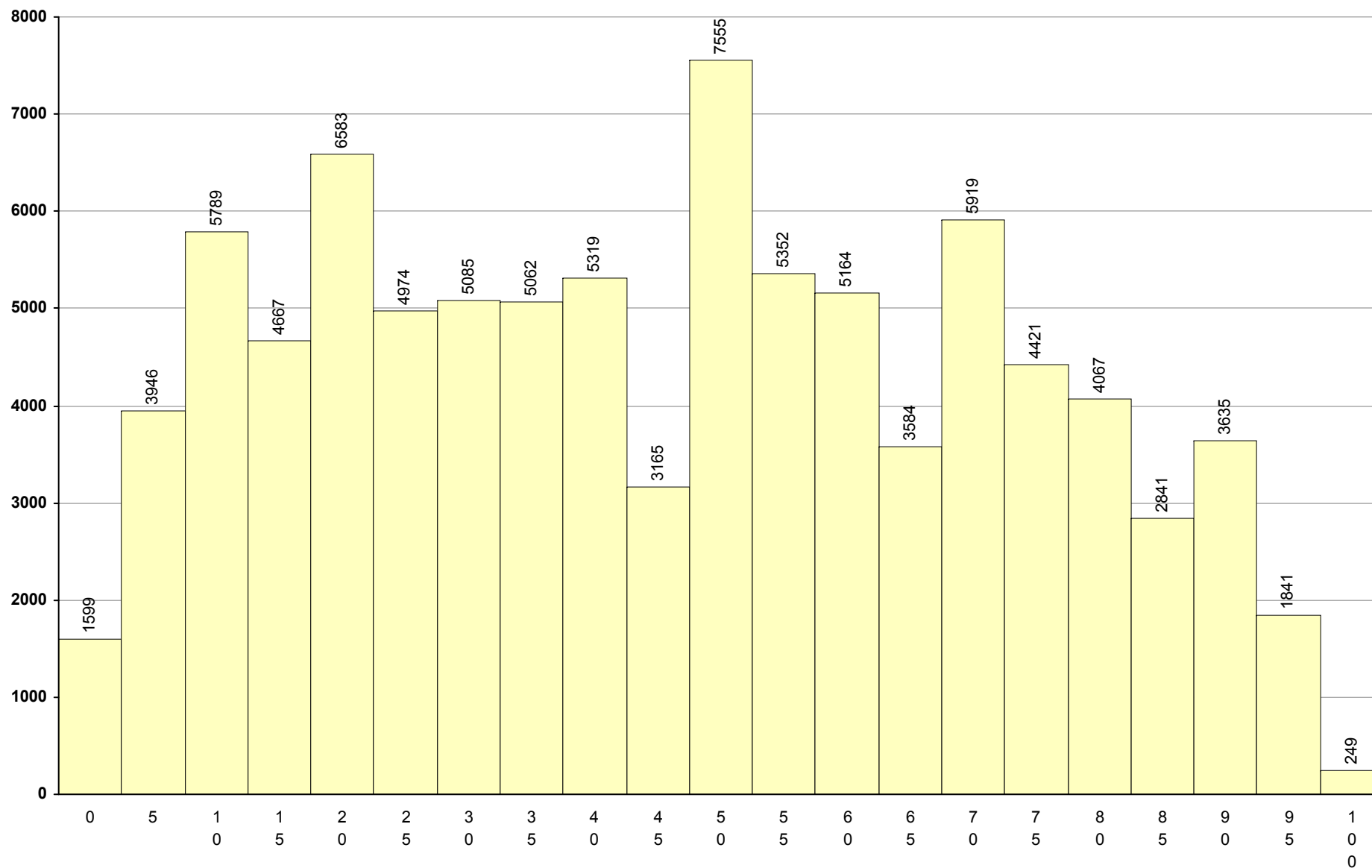
1ª Fase

Provas: 90817

Negativas: 46189

Média: 47

Desvio: 26



93 PLNM A2

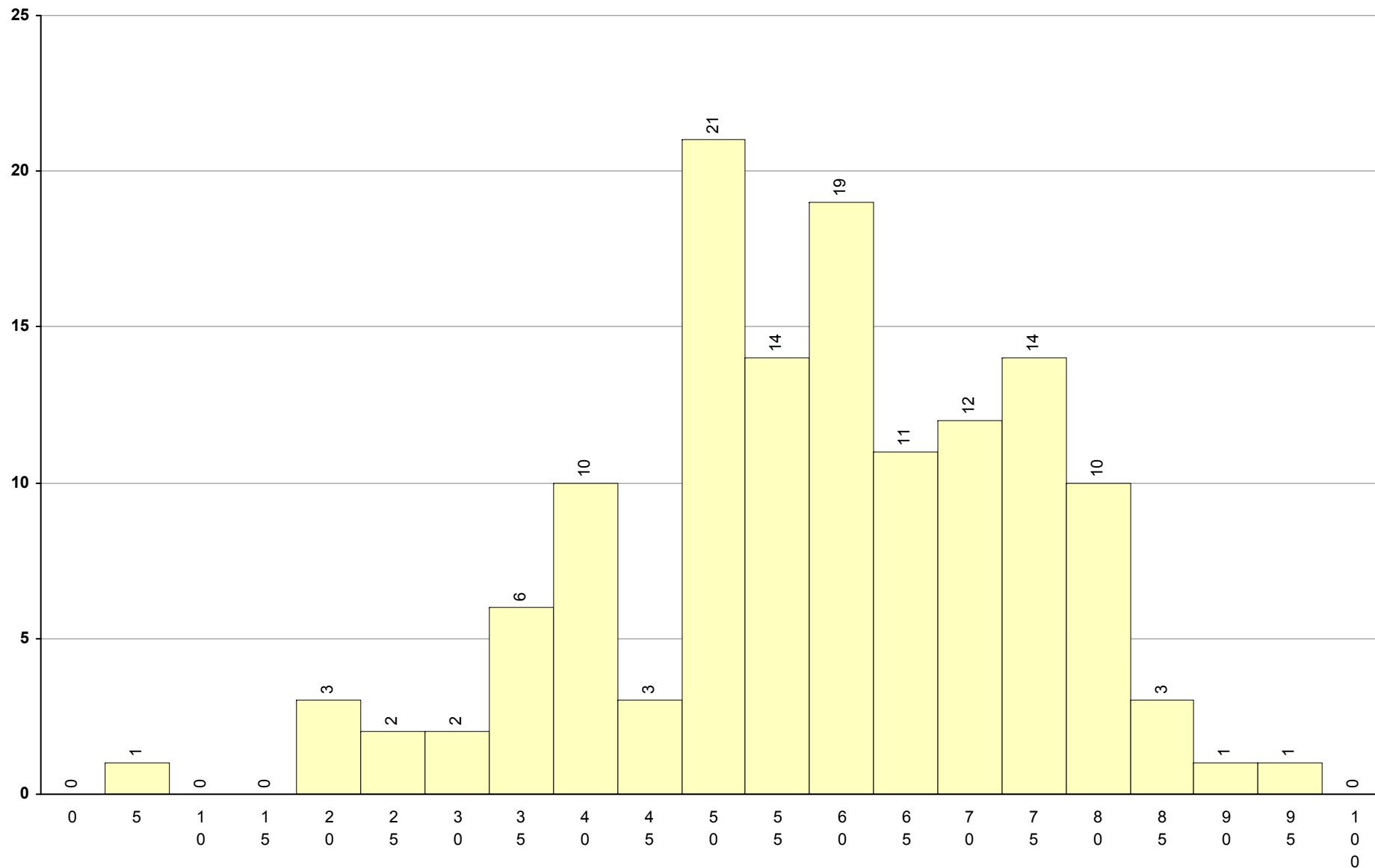
1ª Fase

Provas: 133

Negativas: 27

Média: 60

Desvio: 16



94 PLNM B1	1ª Fase	Provas: 218	Negativas: 46	Média: 59	Desvio: 15
------------	---------	-------------	---------------	-----------	------------

